

HUMAN SKULL ●●●

The following set of reference plates will help you locate some of the more prominent features of the human skull. As you study these photographs, it is important to remember that individual human skulls vary in every characteristic. Also, the photographs in this set depict bones from several different skulls.

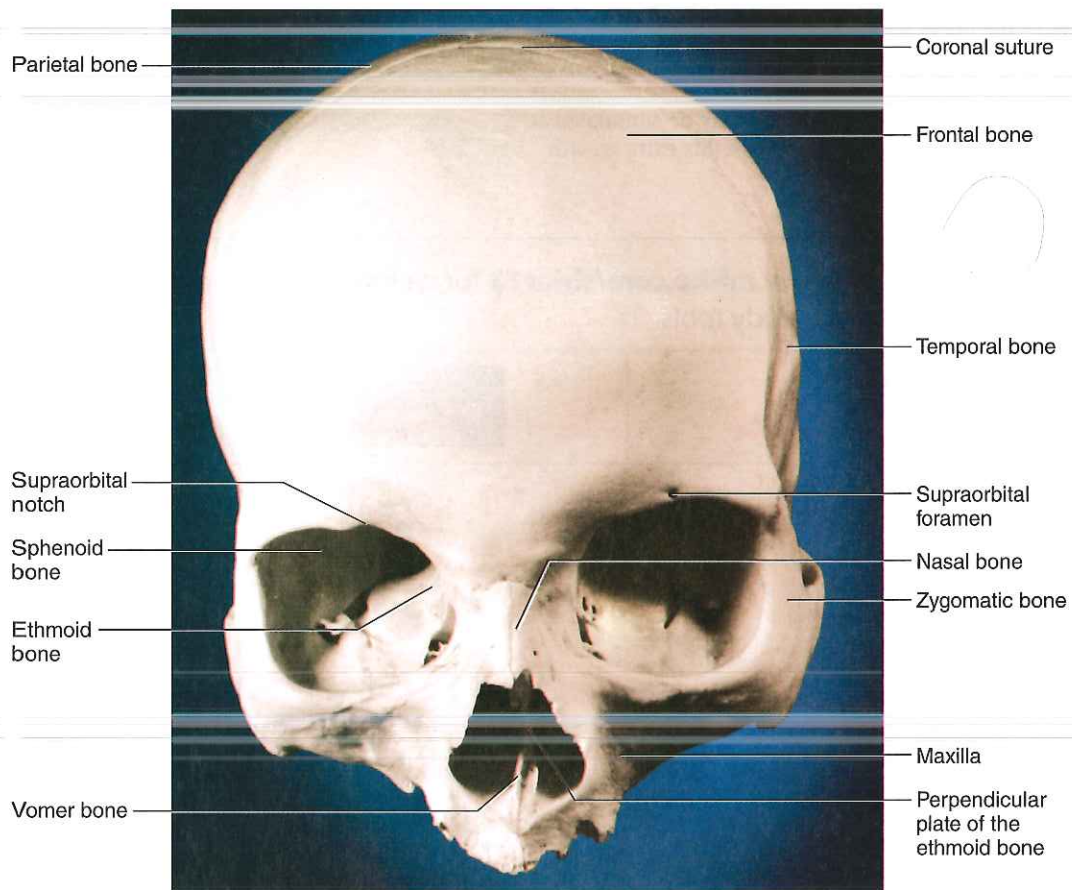


PLATE TWENTY-SIX The skull, frontal view.

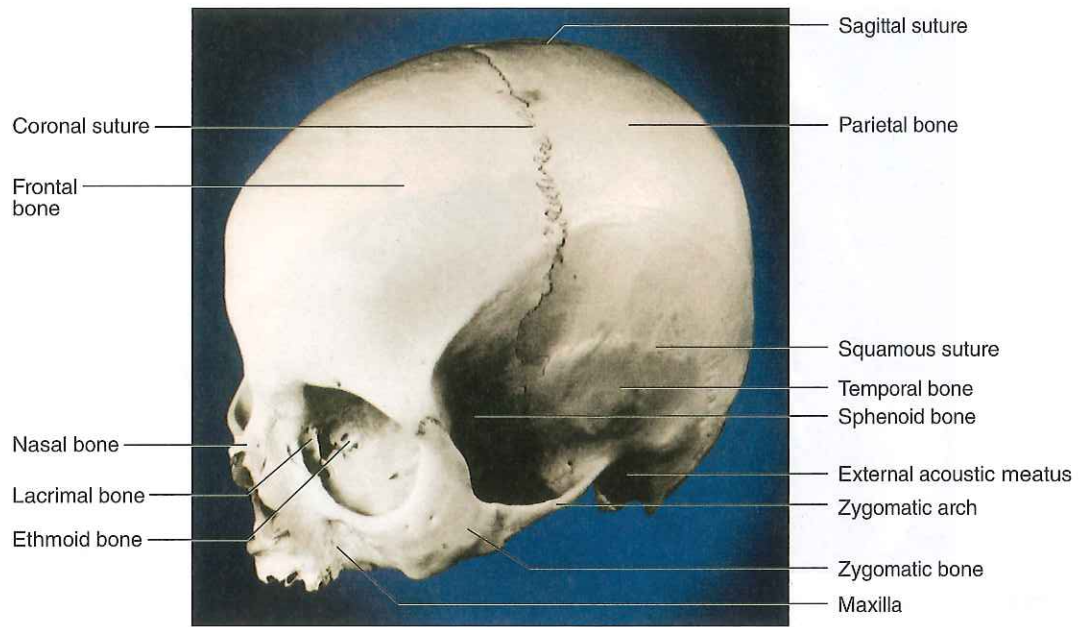


PLATE TWENTY-SEVEN The skull, left anterolateral view.

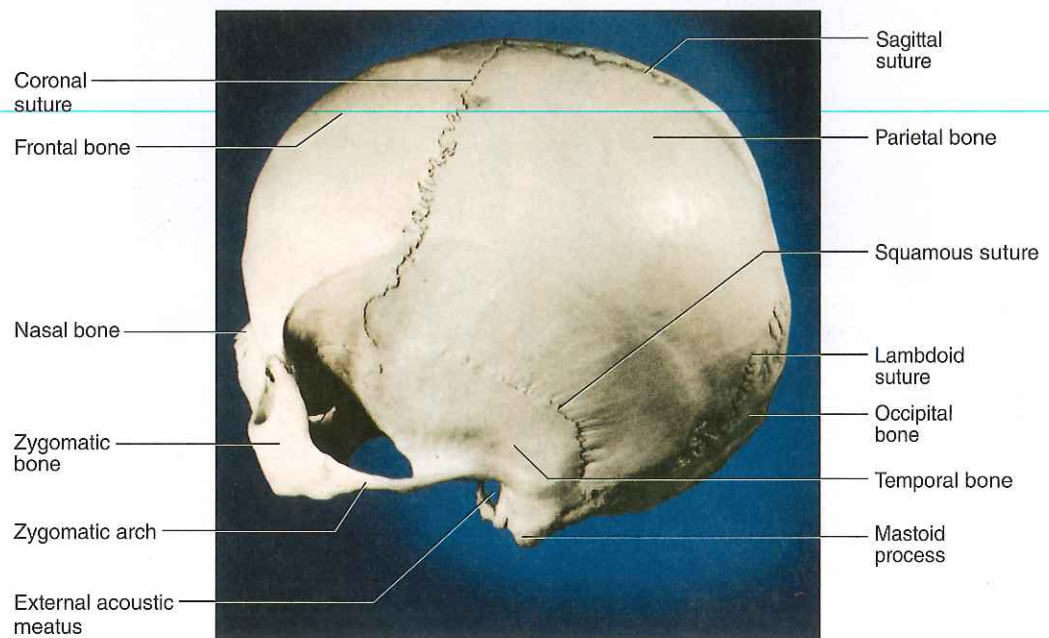


PLATE TWENTY-EIGHT The skull, left posterolateral view.



PLATE TWENTY-NINE Bones of the left orbital region.

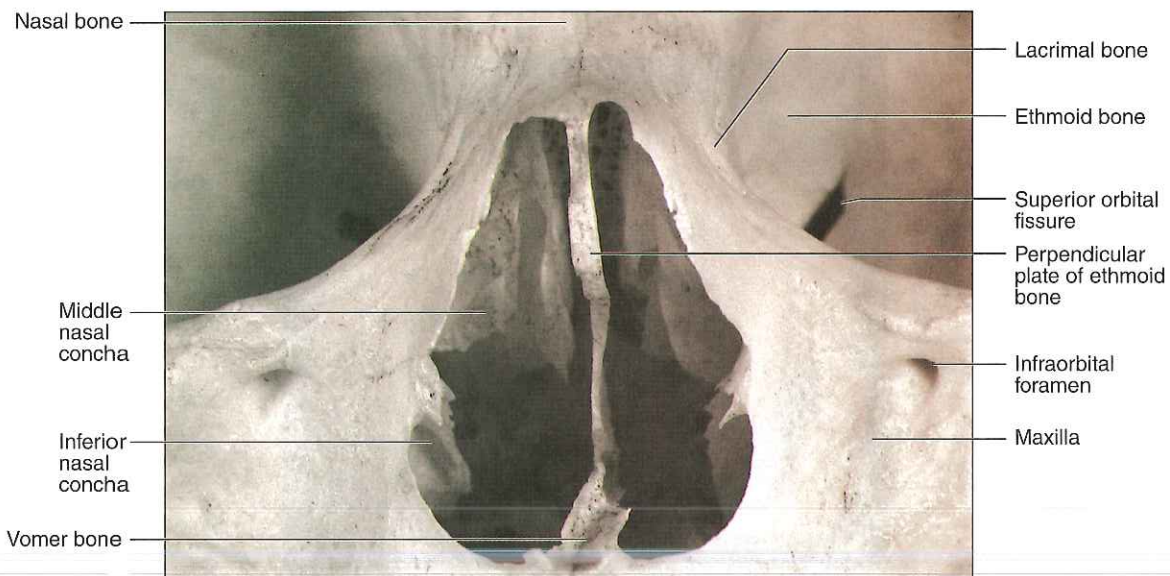


PLATE THIRTY Bones of the anterior nasal region.

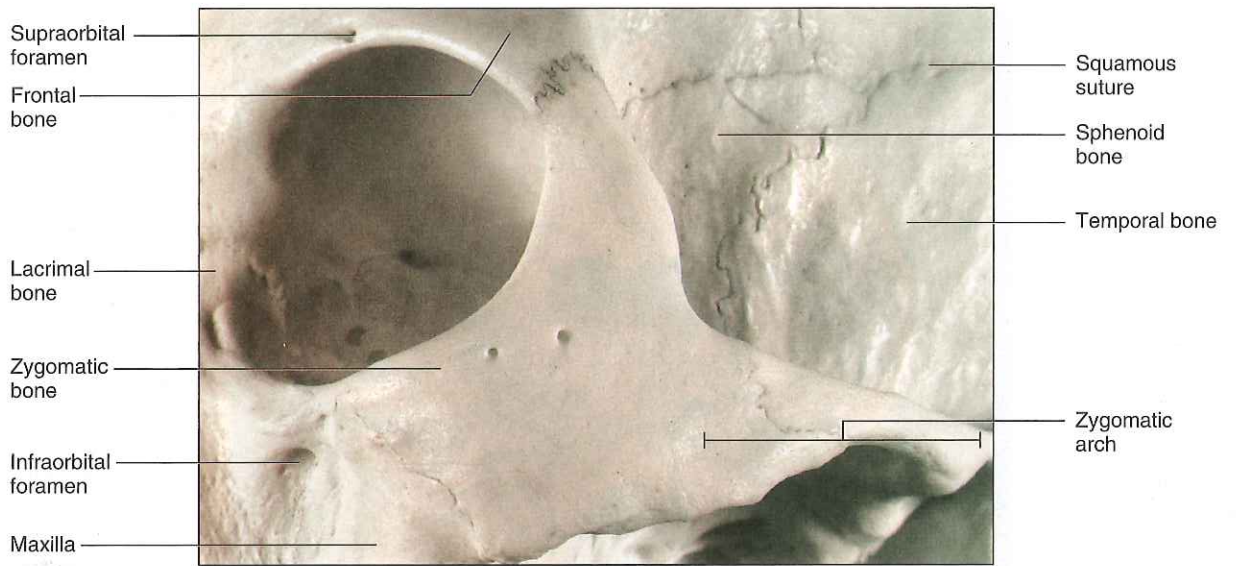


PLATE THIRTY-ONE Bones of the left zygomatic region.

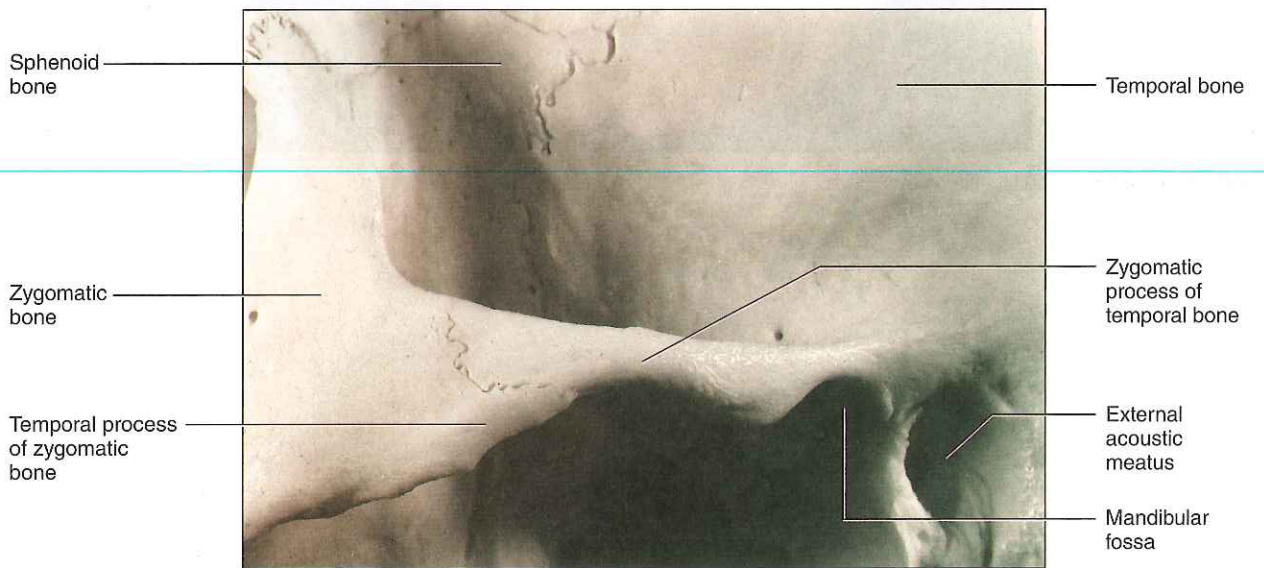


PLATE THIRTY-TWO Bones of the left temporal region.

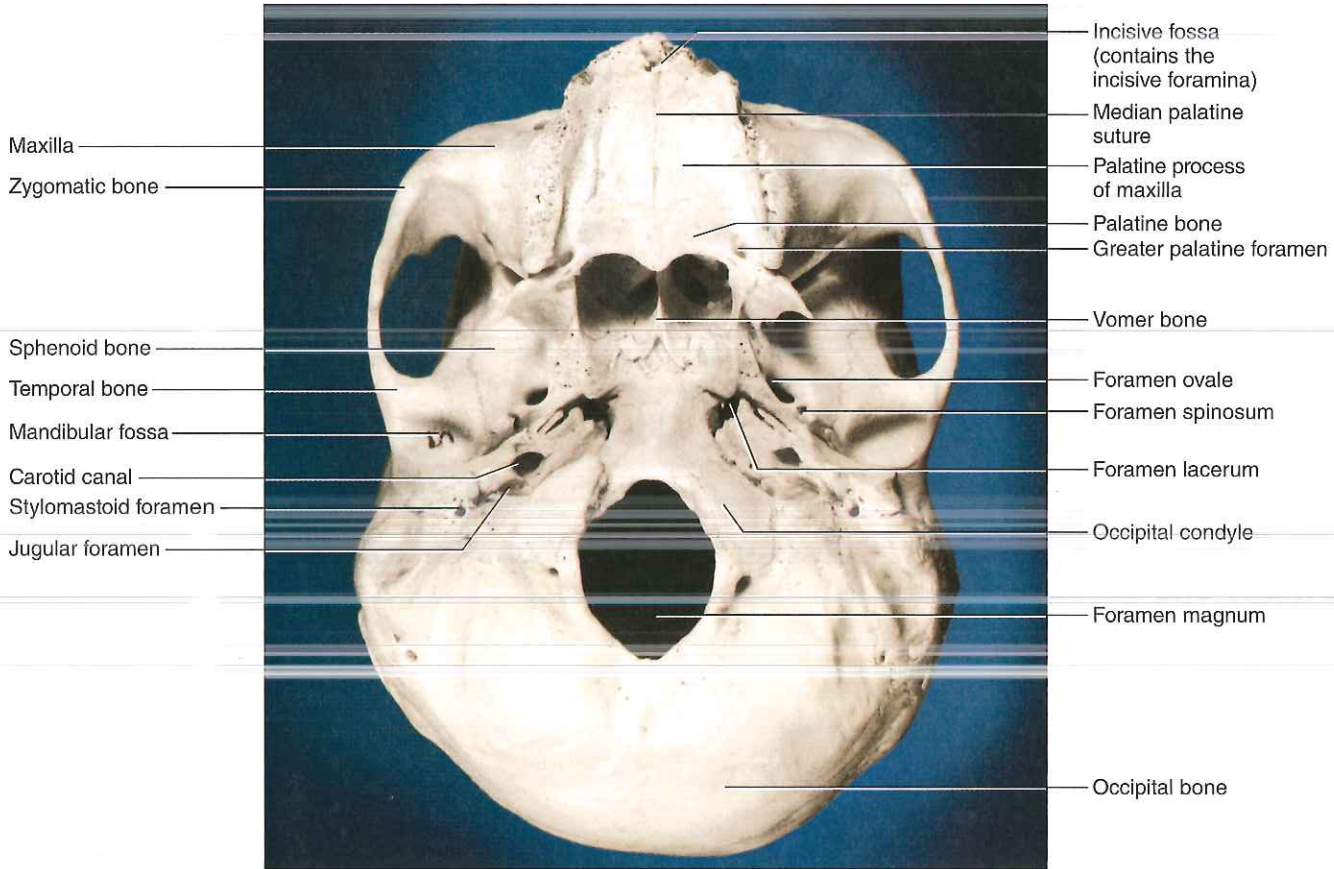


PLATE THIRTY-THREE The skull, inferior view.

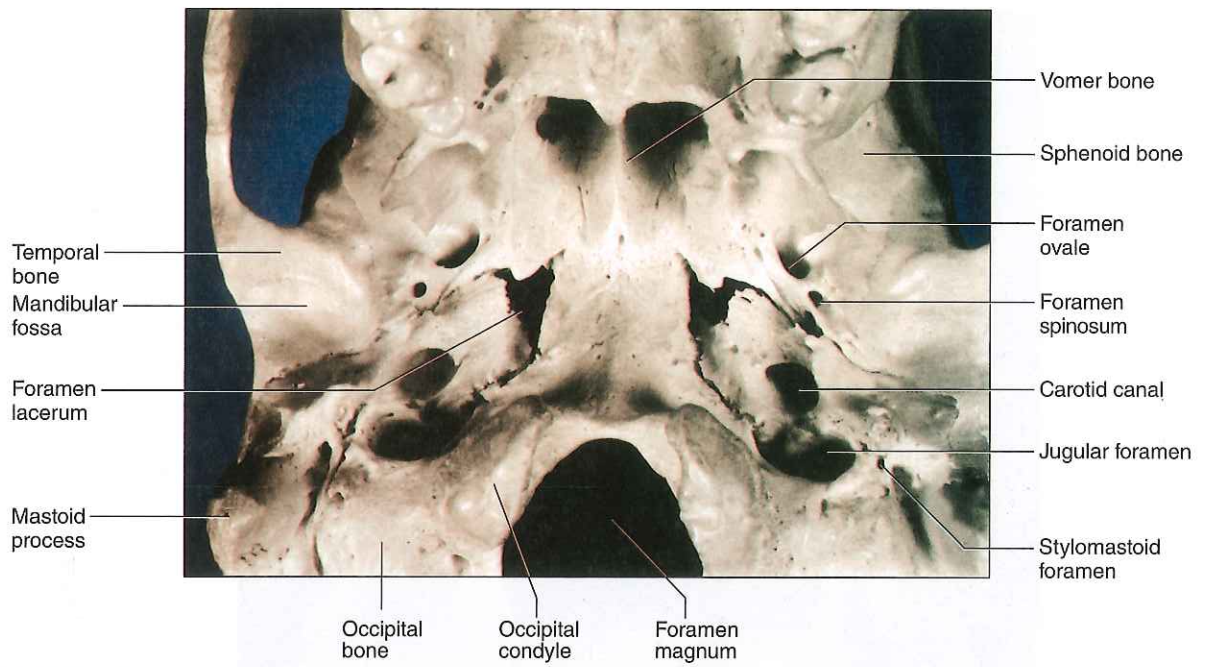


PLATE THIRTY-FOUR Base of the skull, sphenoid region.

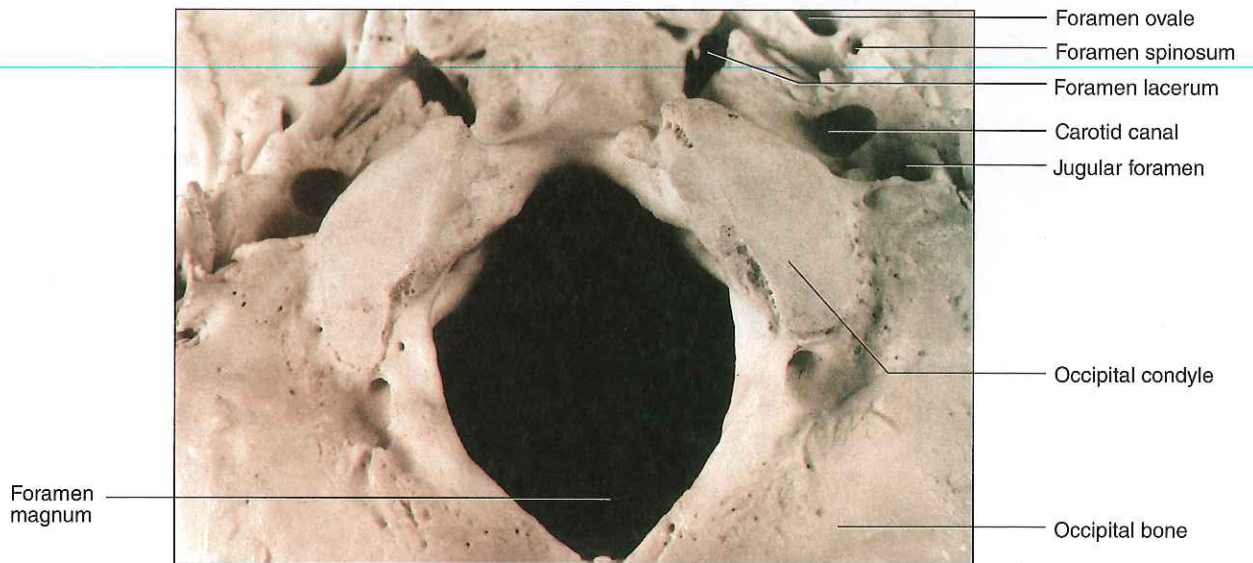


PLATE THIRTY-FIVE Base of the skull, occipital region.

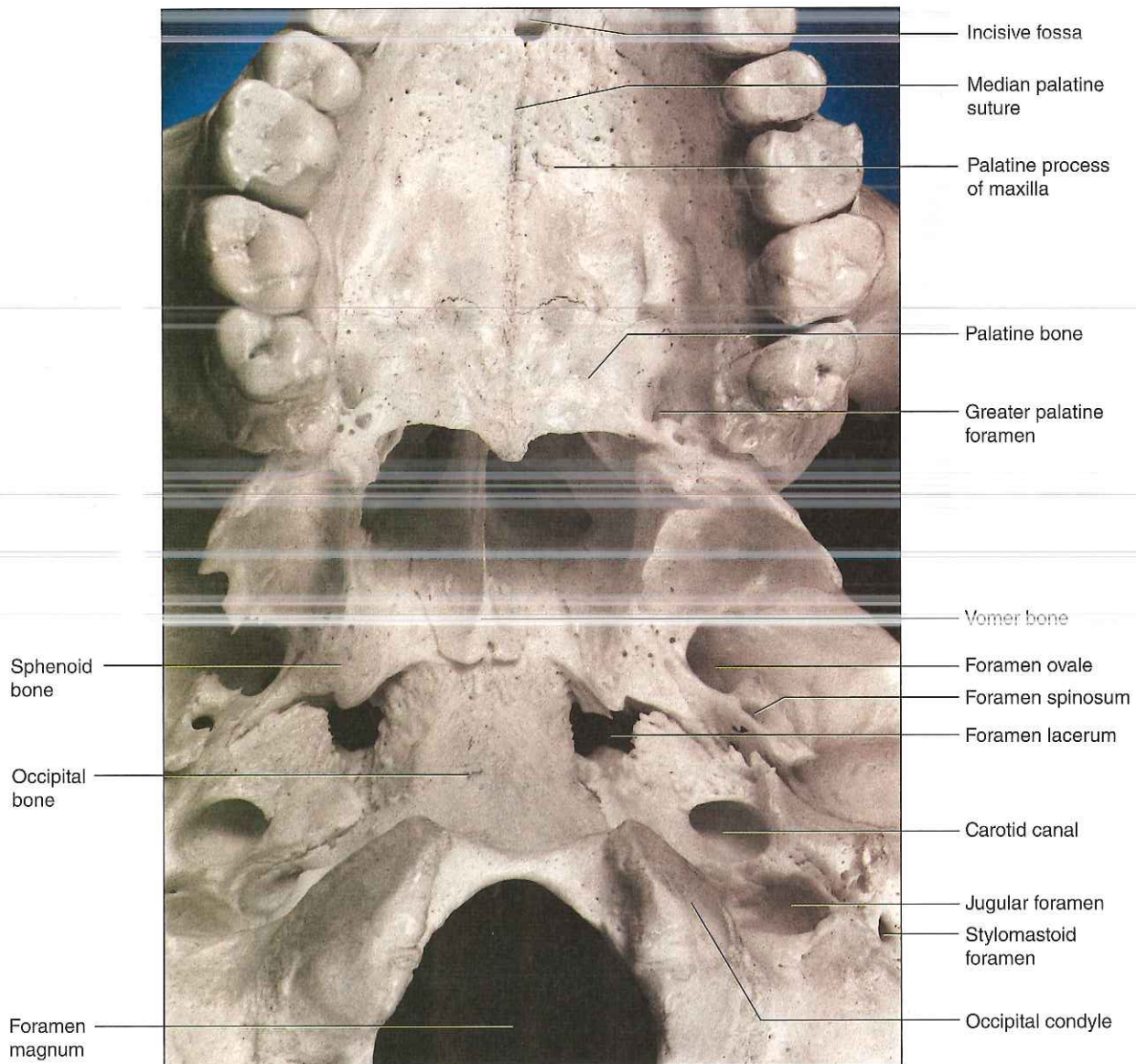


PLATE THIRTY-SIX Base of the skull, maxillary region.

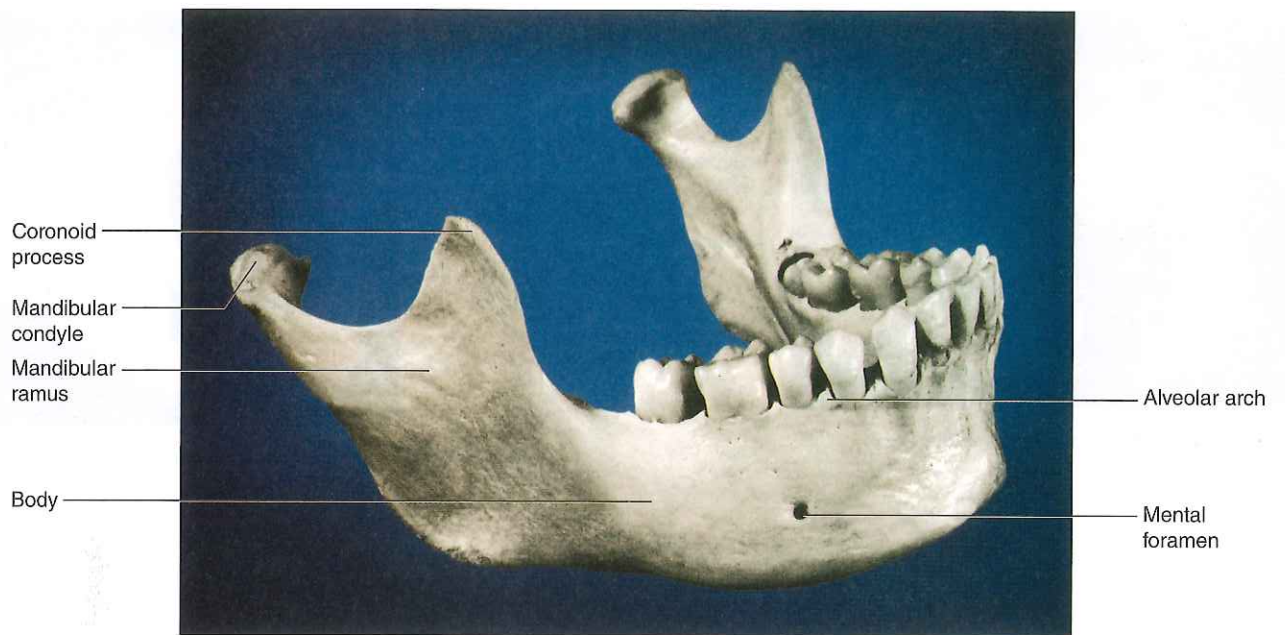


PLATE THIRTY-SEVEN Mandible, right lateral view.

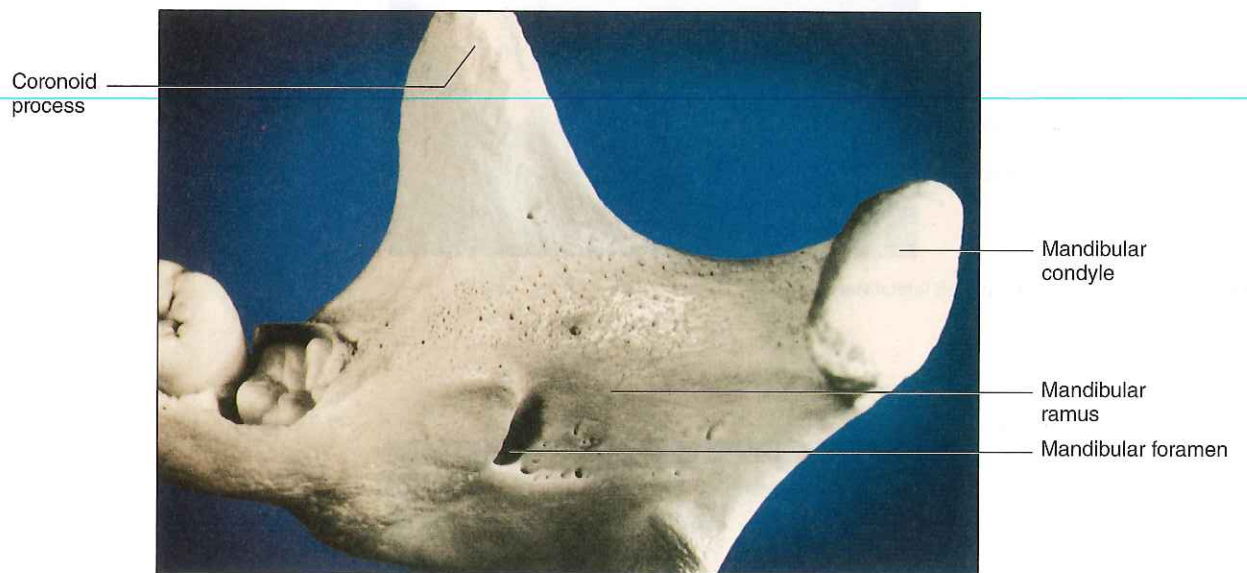
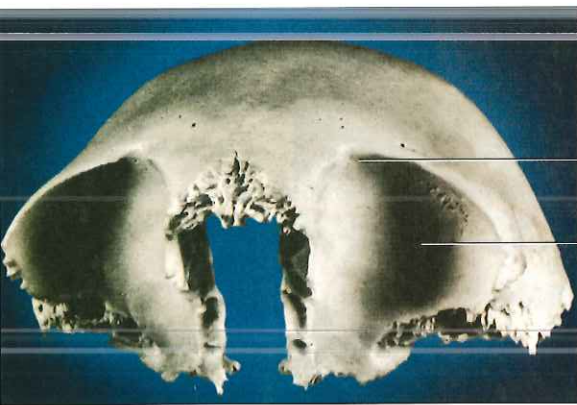
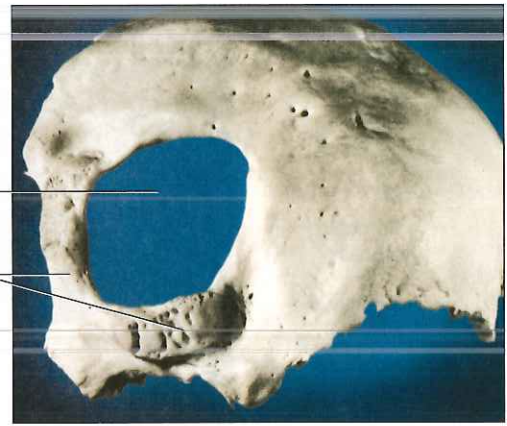


PLATE THIRTY-EIGHT Mandible, medial surface of right ramus.



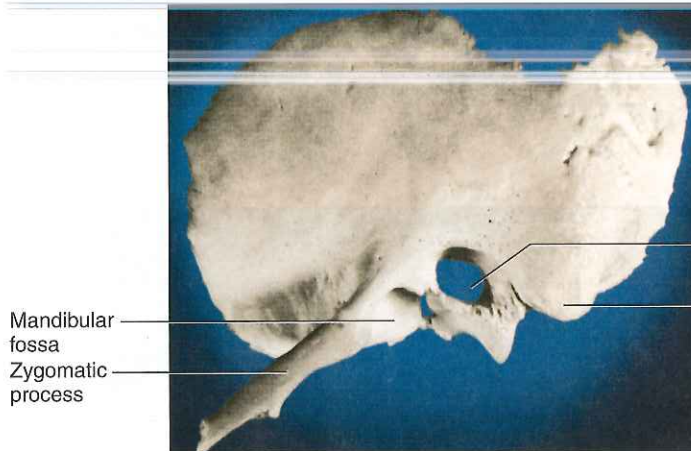
Supraorbital notch
Orbit

PLATE THIRTY-NINE Frontal bone, anterior view.



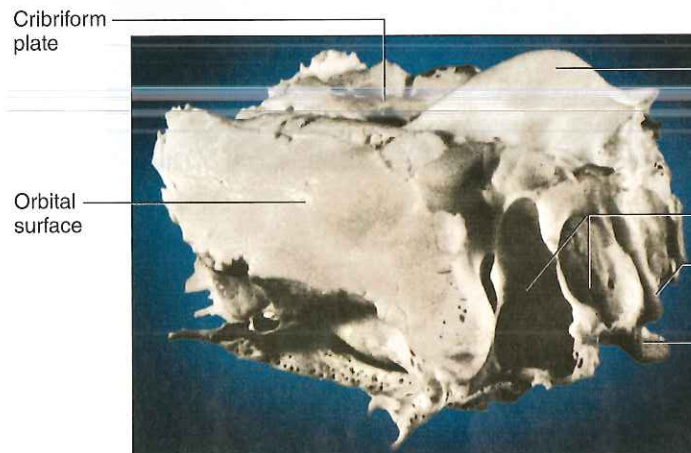
Foramen magnum
Occipital condyles

PLATE FORTY Occipital bone, inferior view.



Mandibular fossa
Zygomatic process
External acoustic meatus
Mastoid process

PLATE FORTY-ONE Temporal bone, left lateral view.



Cribriform plate
Orbital surface
Crista galli
Ethmoidal air cells
Middle nasal concha
Perpendicular plate

PLATE FORTY-TWO Ethmoid bone, right lateral view.

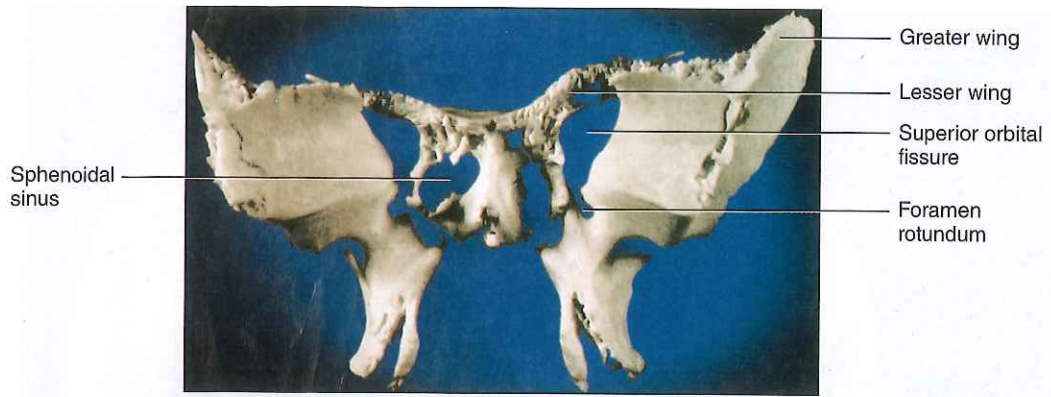


PLATE FORTY-THREE Sphenoid bone, anterior view.

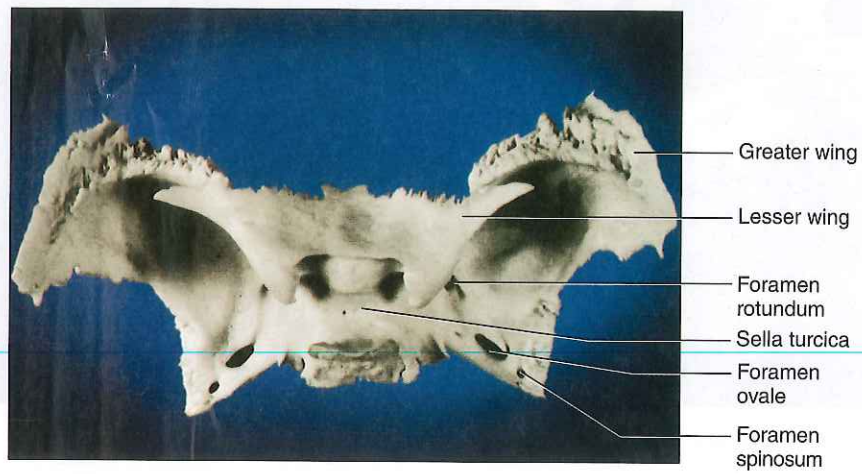


PLATE FORTY-FOUR Sphenoid bone, superior view.

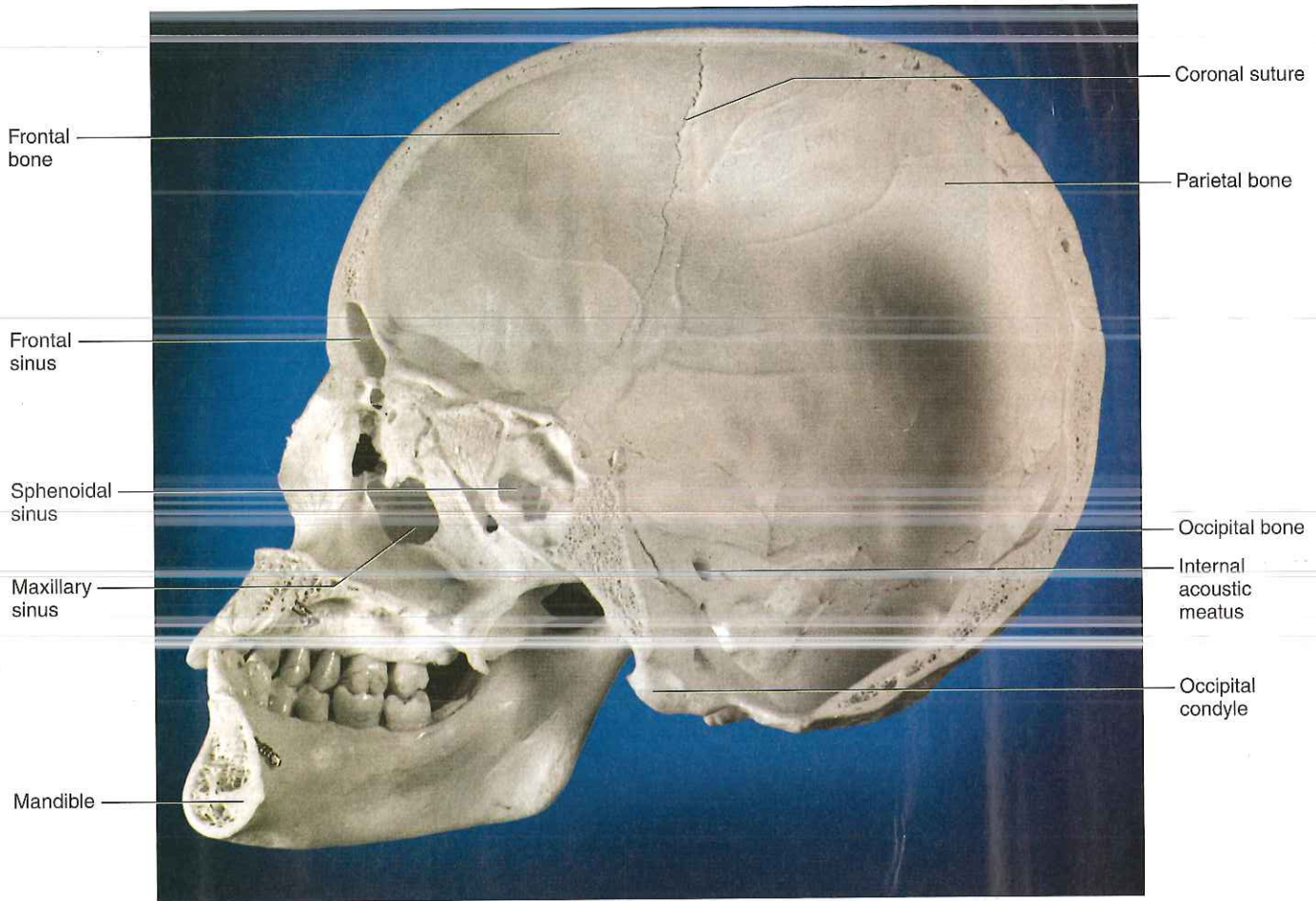


PLATE FORTY-FIVE The skull, sagittal section.

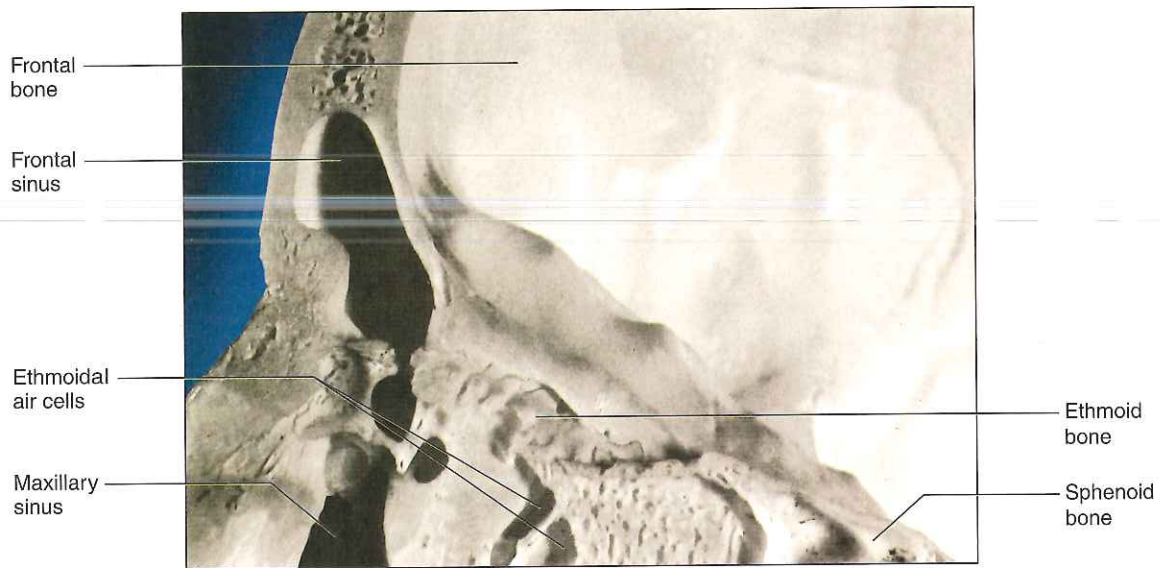


PLATE FORTY-SIX Ethmoidal region, sagittal section.